



MC

HEAVY DUTY WEIGH MODULE

applications

- Tank, Bin and Hopper Weighing
- Mixer and Blender Weighing
- Bulk Material Inventory/Processing
- Silo/Large Vessel Weighing
- Web Tension Measurements

features

- 1,000 to 125,000 lbs. Capacities
- Excellent Overall Performance
- Dual Shear Beam Technology
- 0.03% Accuracy Class
- Steel or Stainless Steel
- Accommodates Vessel Movement
- Self-Checking/Integrated Design
- Easy Installation and Start Up
- IP66/67 Environmental Sealing
- Two Year Warranty

SENTRAN, LLC
California Commerce Center
4355 Lowell Street
Ontario, CA 91761-2225

Toll Free: 1(888) 545-8988
Phone: 1(909) 605-1544
Fax: 1(909) 605-6305
Email: mail@sentranllc.com
URL: www.sentranllc.com



application tip:

The Model *WA* Series load cells feature Dual Shear Beam Technology, field-proven as the best solution for High Capacity Weighing.

The MC Series is an extremely rugged, high performance weigh module constructed of steel (MC1), stainless steel (MC3) or hermetically sealed stainless steel (MC4). The MC Series modules are designed to accurately measure compression loads in capacities ranging from 1,000 lbs. to 125,000 lbs. The robust, rectangular Dual Shear Beam design readily tolerates angular, eccentric and side loading effects, with minimal sensitivity to these anomalies. Optional neoprene Load Receiver Pads (LRP) reduce the effects of shock loading, vibration, thermal expansion, and accommodate minor misalignments with vessel supports. To achieve a sealing rating of IP66 and IP67 (thoroughly sealed against airborne particles, strong jets of water and the effects of immersion up to 1 meter.) proprietary, composite environmental barriers are integrated to protect the load cell. The cable is a durable jacketed cable, with a tinned-copper braided shield for mechanical protection and to minimize the effects of RFI and EMI. The attributes of the MC Series make it ideal for inventory monitoring, tank, bin and hopper weighing, bulk material handling, specialty applications such as web tension and steel coil weighing, as well as for O.E.M. situations where a versatile, high performance solution is needed.



WA1 Steel



MC4 Stainless Steel



WA4 SS Hermetic Seal

Innovative Measurement Solutions





performance

Featuring Model WA Series Dual Shear Beam Load Cells

Rated capacities ⁽¹⁾ (lbs.):	1K, 2.5K, 5K, 10K, 15K, 20K, 25K, 35K, 50K, 75K, 100K & 125K (Higher Capacities Available On Request)
Rated output (FSO)	3 mV/V ± 0.25%
Combined error	≤ 0.03 % FSO
Non-linearity	≤ 0.03 % FSO
Hysteresis	≤ 0.02 % FSO
Non-repeatability	≤ 0.01 % FSO
Side Load Rejection Ratio	≤ 500:1
Creep (20 minutes)	≤ 0.03 % of load
Zero balance	≤ 1 % FSO
Zero return (20 minutes)	Better than 0.03 % FSO

mechanical

Load Cell Material:	Alloy tool steel (MC1) 17-4ph Stainless steel (MC3/MA4)
Load Cell Finish:	Electroless nickel plated (MC1) Electro-polished (MC3/MC4)
Mount Material:	Mild steel or Cast iron (MC1) Stainless steel (MC3/MC4)
Mount Finish:	Plated (MC1) Bead Blasted (MC3/MC4)
Safe overload	Compression/Tension: 150% FSO Side load: 100% FSO
Ultimate overload	Compression/Tension: 300% FSO Side load: 150% FSO
Weight	See table below

electrical

Input impedance	770 ± 10 ohms
Output impedance	700 ± 3 ohms
Insulation resistance	>5000 Megohms @ 50VDC
Excitation Voltage	10 V AC/DC (15 V maximum)
Cable Color code:	+ Excitation (red) - Excitation (black) + Output (green) - Output (white) Shield (bare)
Cable type	4-conductor; 22 AWG; tinned-copper braided shield; Jacketed
Cable termination	Finished conductors

environmental



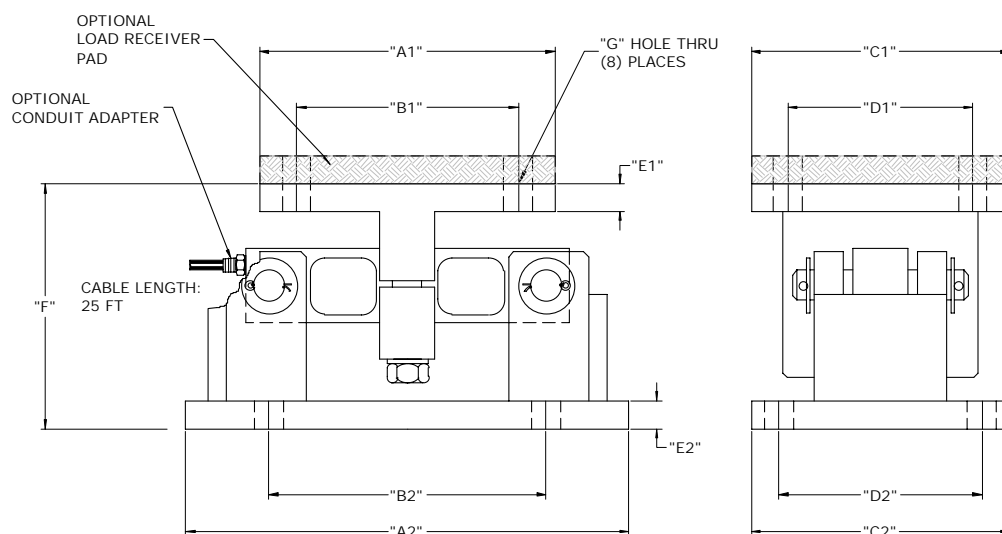
Temperature, operating	4 to +140 °F (-20 to +60°C)
Temperature, compensated	14 to +104 °F (-10 to +40°C)
Temperature effects:	Zero < 0.0015% FSO/°F < 0.0026% FSO/°C Output < 0.0008% of Rdg./°F < 0.0014% Rdg./°C
Sealing	IP67 WA1/WA3); IP66 (WA4)

options

Special Cable Lengths, High Temperature Operation, Load Receiver Pads, Conduit Adapters, Higher and/or Non-Standard Capacities.

dimensions

100% CUSTOMER SATISFACTION GUARANTEED



DIMENSIONAL TAB BLOCK

CAPACITY (LB)	"A1"	"A2"	"B1"	"B2"	"C1"	"C2"	"D1"	"D2"	"E1"	"E2"	"F"	"G"	WEIGHT (LB)
1K - 5K	4.00	9.31	2.75	6.25	4.00	5.00	2.75	3.75	0.50	0.50	5.00	0.56	18
10K - 35K	8.00	12.00	6.00	7.50	8.00	8.00	6.00	6.00	0.75	0.75	7.89	0.78	75
50K - 75K	9.00	16.25	6.50	11.50	9.00	12.00	6.50	9.50	1.00	1.00	9.31	0.78	170
100K - 125K	10.00	19.00	8.00	16.00	10.00	12.00	8.00	10.00	1.25	1.25	9.51	1.12	215