



MH

WEIGH MODULE

applications

- Tank, Bin and Hopper Weighing
- Mixer and Blender Weighing
- Bulk Material Inventory/Processing
- Silo/Large Vessel Weighing
- Legal-For-Trade Certified Systems

features

- 5,000 to 150,000 lbs. Capacities
- Excellent Overall Performance
- Dual Shear Beam Technology
- 0.02% NTEP Accuracy Class
- Epoxy-Coated Steel Mount
- Accommodates Vessel Movement
- Self-Checking/Integrated Design
- Matched Output Sensitivities
- IP67 Environmental Sealing
- Two Year Warranty

SENTRAN, LLC
California Commerce Center
4355 Lowell Street
Ontario, CA 91761-2225

Toll Free: 1(888) 545-8988
Phone: 1(909) 605-1544
Fax: 1(909) 605-6305
Email: mail@sentranllc.com
URL: www.sentranllc.com



NIST H-44 NTEP CERTIFIED "LEGAL-FOR-TRADE" ME1 LOAD CELLS

- CLASS IIIIL: 10,000D/Multiple
- 20, 000 Through 150,000 lbs. Capacities

The MH Series is a robust, high performance weigh module constructed of steel (MH1) and coated in durable two-part epoxy paint. The MH Series modules are designed to accurately measure compression loads in capacities ranging from 5,000 lbs. to 150,000 lbs. The rugged Dual Shear Beam design readily tolerates angular, eccentric and side loading effects, with minimal sensitivity to these anomalies. The MH1 Series features a unique "sliding pin" load plate to accommodate temperature-induced vessel movement. Optional neoprene Load Receiver Pads (LRP) reduce the effects of shock loading, vibration and thermal expansion, and accommodate minor misalignments with vessel supports. To achieve a sealing rating of IP67 (thoroughly sealed against airborne particles and the effects of immersion up to 1 meter.) proprietary, composite environmental barriers are integrated to protect the load cell. The integral cable is durable PE/PVC DuoWrap® jacketed and features a braided, tinned-copper shield for mechanical protection and to minimize the effects of RFI and EMI. The attributes of the MH Series make it ideal for inventory monitoring, tank/bin/hopper weighing, bulk material handling, specialty applications such large scale platforms and steel coil weighing, as well as for O.E.M. situations where a versatile, rugged and high performance NTEP Certified measurement solution is needed.



WE1 Load Cell

Innovative Measurement Solutions





performance



CLASS III: 10,000/Multiple
20,000 Through 150,000 lbs. Capacities ME1 Load Cells

Rated capacities ⁽¹⁾ (lbs.):	5K, 10K, 20K, 30K, 40K, 50K, 60K, 100K & 150K
Rated output (FSO)	3 mV/V ± 0.25%
Combined error	≤ 0.03 % FSO
Non-linearity	≤ 0.03 % FSO
Hysteresis	≤ 0.02 % FSO
Non-repeatability	≤ 0.01 % FSO
Side Load Rejection Ratio	≤ 500:1
Creep (20 minutes)	≤ 0.03 % of load
Zero balance	≤ 1 % FSO
Zero return (20 minutes)	Better than 0.03 % FSO

⁽¹⁾ ("K" = thousand)

mechanical

Load Cell Material	Alloy tool steel (WE1)
Load Cell Finish	Electroless nickel plated (WE1)
Mount Material	Mild steel (MH1)
Mount Finish	Epoxy coated (MH1)
Safe overload:	Compression/Tension: 150% FSO Side load: 100% FSO
Ultimate overload:	Compression/Tension: 300% FSO Side load: 150% FSO
Load Cell Deflection	< 0.020" (0.5mm)
Weight	See table below

electrical

Input impedance	770 ± 10 ohms
Output impedance	700 ± 5 ohms
Insulation resistance	>5000 Megohms @ 50VDC
Excitation Voltage	10 V AC/DC (15 V maximum)
Cable Color code:	+ Excitation (red) - Excitation (black) + Output (green) - Output (white) Shield (bare)
Cable type	4-conductor, 22 AWG, PE/PVC DuoWrap [®] jacket; tinned-copper shield; free end termination

environmental

67



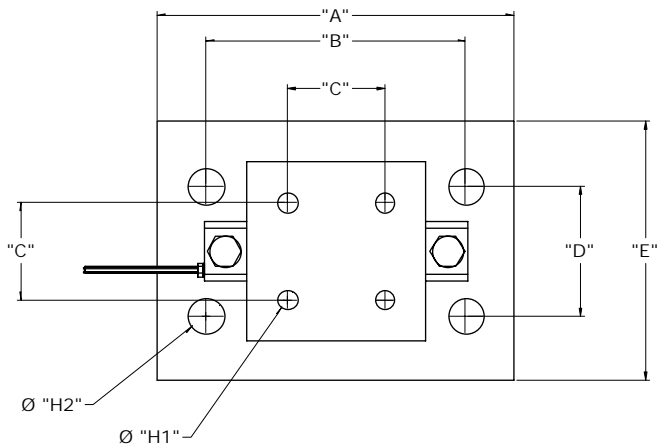
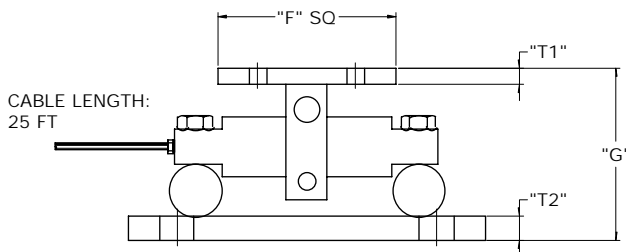
Temperature, operating	4 to +140 °F (-20 to +60°C)
Temperature, compensated	14 to +104 °F (-10 to +40°C)
Temperature effects:	Zero < 0.0015% FSO/°F < 0.0026% FSO/°C Output < 0.0008% of Rdg./°F < 0.0014% Rdg./°C
Sealing	IP67; Multi-redundant

options

Special Cable Lengths, High Temperature Operation, Load Receiver Pads, Conduit Adapters, Unique Mounting and Control Instrumentation.

dimensions

100%
CUSTOMER SATISFACTION
GUARANTEED



DIMENSIONAL TAB BLOCK

CAPACITY (LB)	"A"	"B"	"C"	"D"	"E"	"F"	"G"	"H1"	"H2"	"T1"	"T2"	WEIGHT (LB)
5K - 20K	11.0	8.0	3.00	4.00	8.0	5.5	5.3	0.56	1.06	0.50	0.75	34
30K - 60K	15.0	11.5	5.13	6.00	10.0	8.0	8.4	0.75	1.22	0.75	1.00	86
100K - 150K	18.0	14.0	7.50	9.00	12.0	10.0	10.4	0.81	1.38	1.25	1.25	168